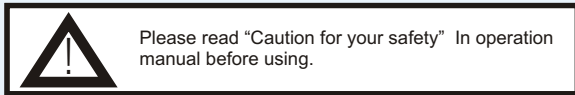


Features

- Reverse polarity protection and overload protection(DC)
- Operation confirmed easily by a red indicator lamp
- Wide range of applications(for replacement of micro switch, limit switch, etc.)
- Ip67 (IEC standard)
- Enhanced noise - Resistance by using exclusive IC (DC Power)

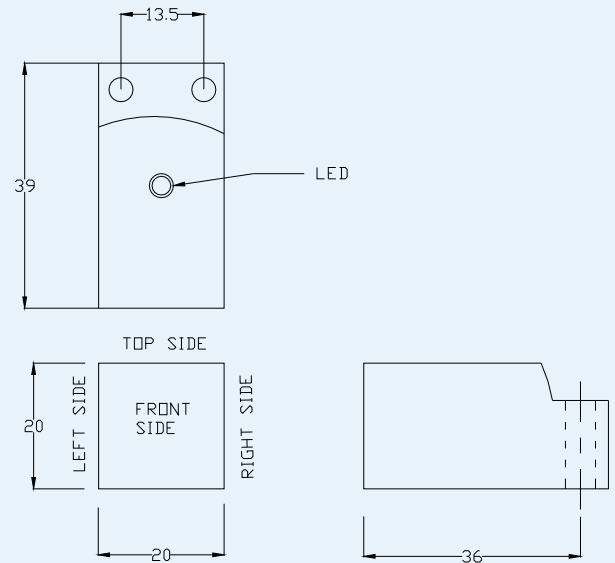


Ordering information (Block type DC power switch)

IPS	P	BL	F	18	P	O	20	W	02
Inductive proximity switch	P-Plastic	BL-Block	F-Front T-Top L-Left R-Right	Indicate size(mm) Block width	P-PNP N-NPN	O-NO C-NC	20-200mA 30-300mA 50-500mA (Load current)	W-Wire	Cable length (mtr.)

Specifications

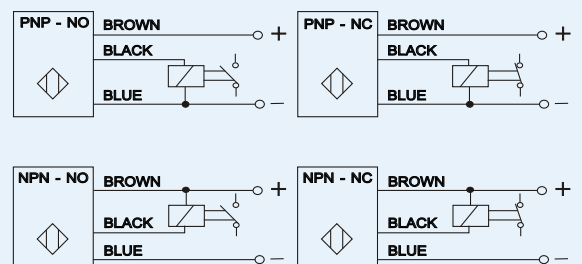
Model Type	IPS-BL
Dimensions (mm)	W 20 X H 20 X L 39
Housing material	ABS Plastic
Indicator	Red led
Power supply	10 ... 30 V DC
Control output	200mA
Leakage current	Max. 0.9mA
Switching output	PNP or NPN
Output function	NO or NC
Installation Side	Top, Front, Left, Right
Sensing distance (mm)	8
Response frequency Hz	250
Hysteresis	10 ... 15% of Sn
Ambient humidity	35 ... 95% RH
Ambient temperature	0 deg. C. to 70 deg. C.



Standard Model:

IPS-PBLF20-PO20W02	IPS-PBLF20-NO20W02
IPS-PBLT20-PO20W02	IPS-PBLT20-NO20W02
IPS-PBLL20-PO20W02	IPS-PBLL20-NO20W02
IPS-PBLR20-PO20W02	IPS-PBLR20-NO20W02

Connection detail



* Barrel thread pitch 1mm

Please contact factory for customize product

Specifications are subject to change without prior intimation